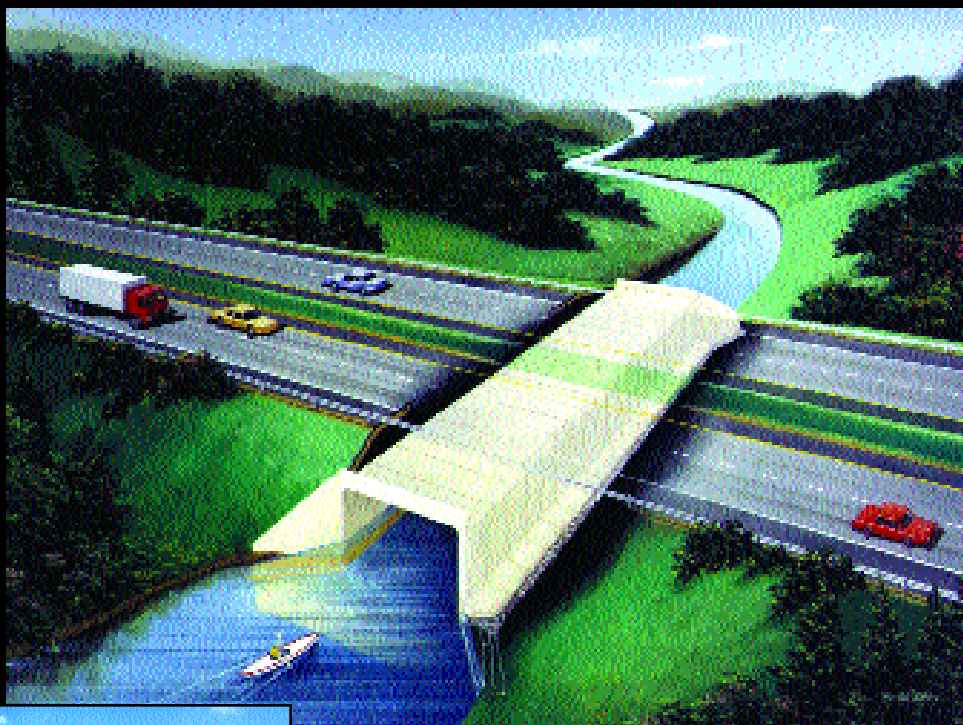


omega™ culvert

the last culvert you'll ever need



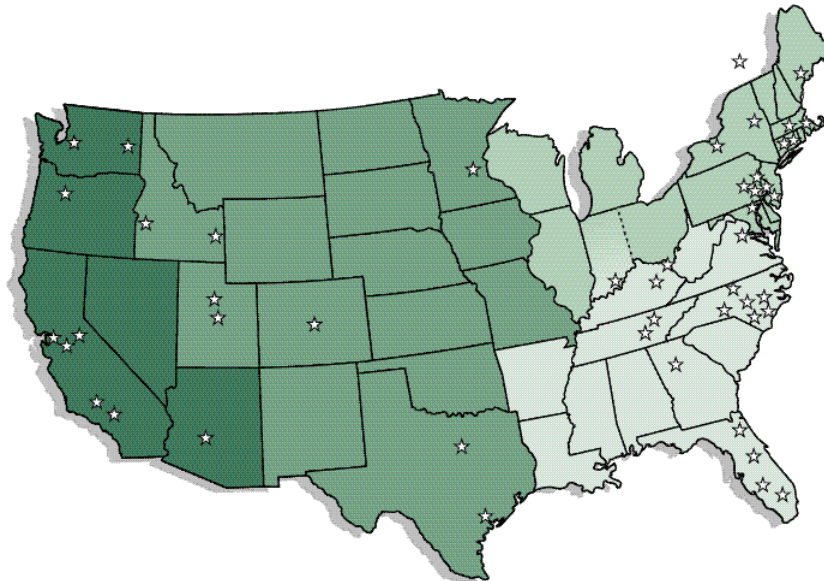
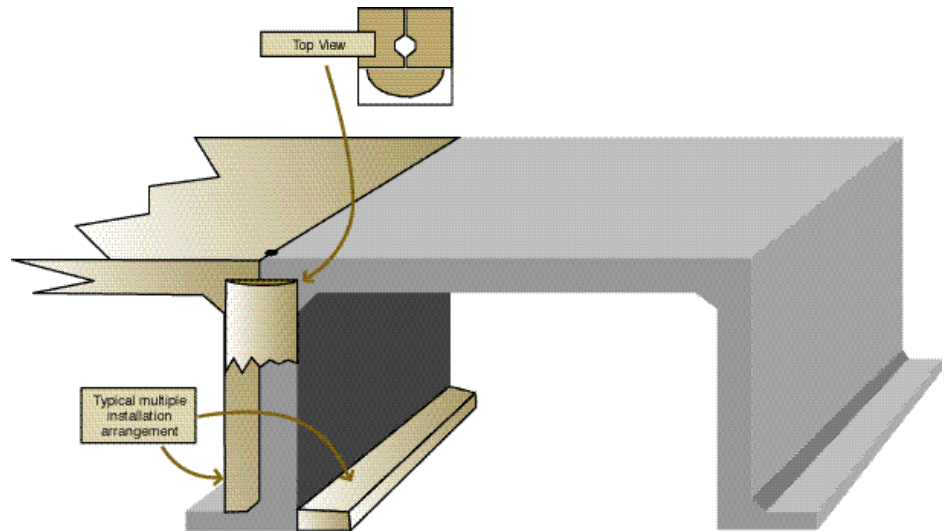
 **Oldcastle Precast®**



*integral footing for smaller span bridges
spans of 12', 16', 20' and 24'
rises from 1' to 12' (in 1-foot increments)*

features

- environmentally sensitive
- simple one-piece installation
- backfill immediately
- low maintenance design
- AASHTO HS25 design (1.5' – 4' cover)
- comprehensive design support
- matching wingwalls available
- curved alignments made easy



info@oldcastleprecast.com | 888-232-6274 | oldcastle-precast.com