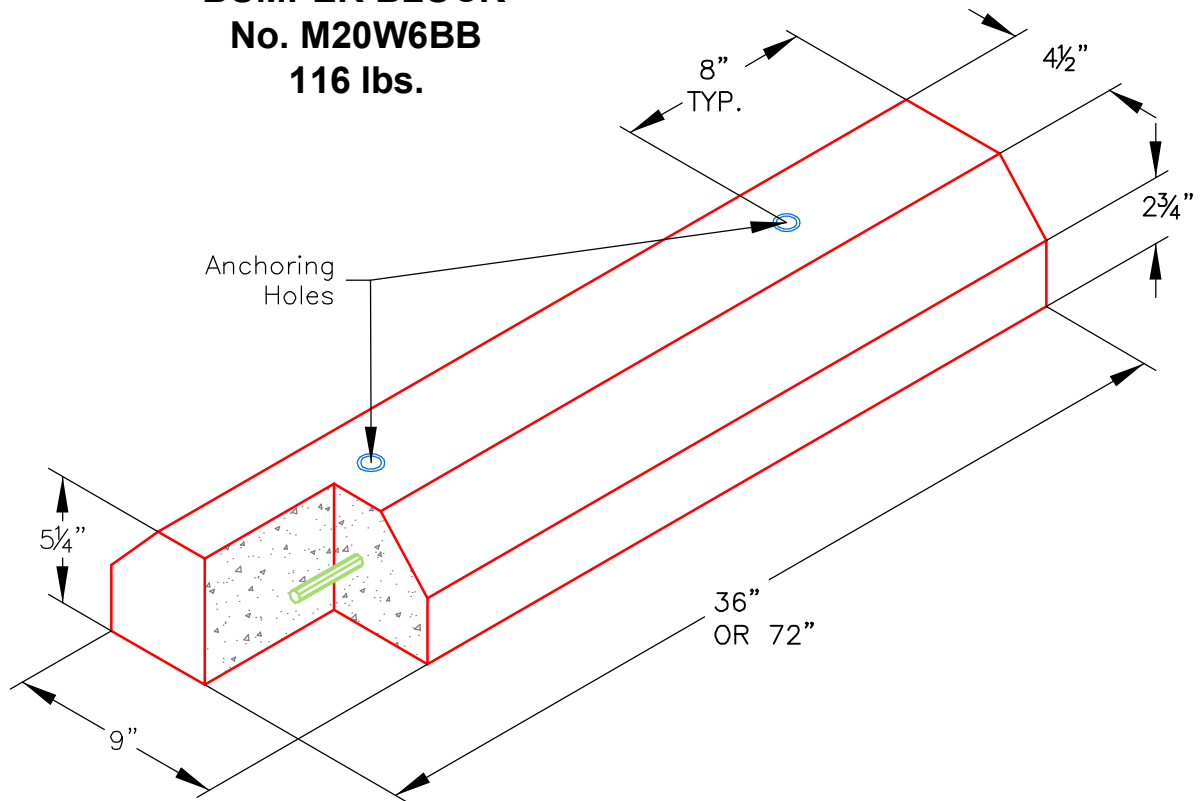


BUMPER BLOCK
No. M20W6BB
116 lbs.



A specifically designed bumper block for use in school campuses, shopping centers, apartments, playgrounds, ect. Made of reinforced concrete to withstand constant use and rough service. Can be installed with epoxy adhesive for permanent installation or without for non-permanent use. Approximate dimensions and weight shown.

Ordering Code	Item	Approx. Shipping Weight	Description
M20W6BB	BUMPER	116	3' Bumper block, reinforced concrete
M20W7BB	BUMPER	232	6' Bumper block, reinforced concrete



Oldcastle Precast®
Enclosure Solutions

MADERA/TRACY/ROSEVILLE/PHOENIX
 Phone: (800) 486-7070 Fax: (800) 486-6804
 Copyright © 2009 Oldcastle Precast Inc.

BUMPER BLOCK

FILE NAME: 20W6BUMBLOCK_ISO

ISSUE DATE: January, 2009

www.oldcastleprecast.com

BUMPER BLOCK

