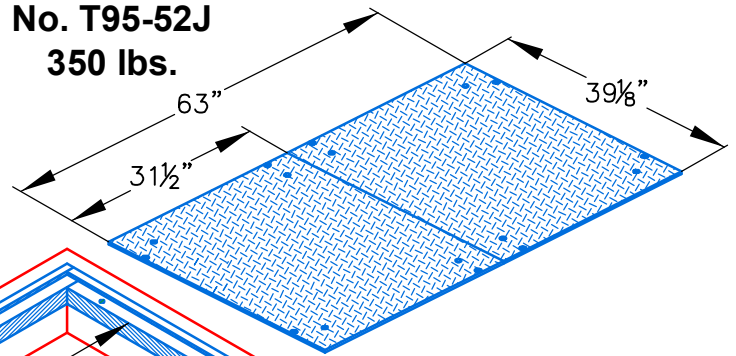


T95 ELECTRICAL VAULT

STEEL COVER

No. T95-52J

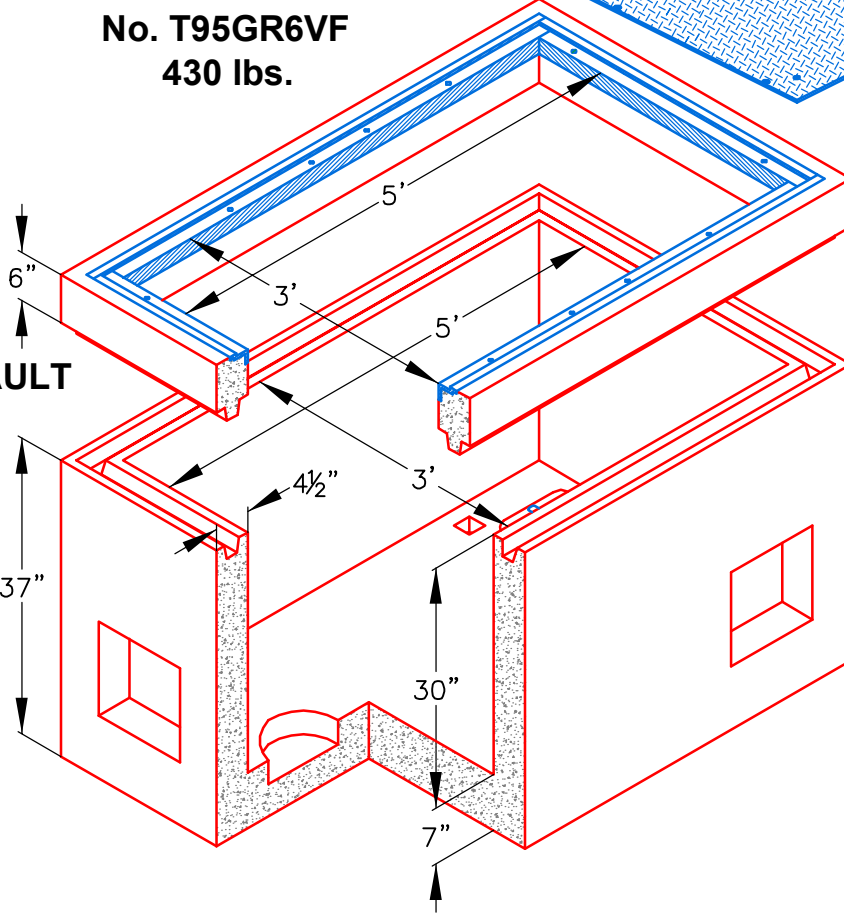
350 lbs.



GRADE RING

No. T95GR6VF

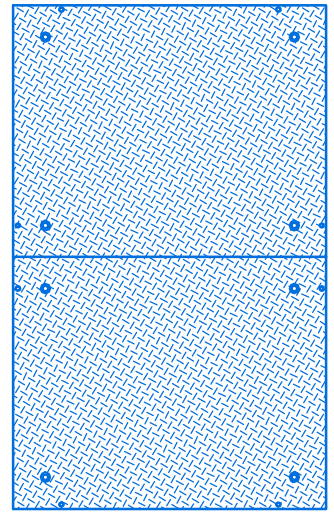
430 lbs.



ELECTRICAL VAULT

No. T95V-NF

3245 lbs.



T95-52JH

A heavy duty reinforced concrete box with standard knockouts and pulling irons. Approximate dimensions and weight shown.

Ordering Code	Item	Approx. Shipping Weight	Description
T95V	VAULT	3245	T95 Electrical Vault Traffic (3' x 5' x 30" deep) No Vault Frame
T95-52J	COVER	350	2 pc. Steel checker plate, parkway, bolt down
T95-52JH	COVER	495	2 pc. Steel checker plate, H/20 loading, bolt down
T95GR6-VF	GRADE-RING	575	T95 grade ring (3' x 5' x 6") with vault frame
T95GR6	GRADE-RING	430	(3' x 5' x 6") Reinforced concrete, no frame
T95GR12	GRADE-RING	985	(3' x 5' x 12") Reinforced concrete, no frame

Galvanizing available on all steel covers



Oldcastle Precast®
Enclosure Solutions

MADERA/TRACY/ROSEVILLE/PHOENIX
Phone: (800) 486-7070 Fax: (800) 486-6804
Copyright © 2009 Oldcastle Precast Inc.

T95 VAULT

FILE NAME: T95_ISO

ISSUE DATE: January, 2009

www.oldcastleprecast.com

T95 ELECTRICAL VAULT

3' X 5'

