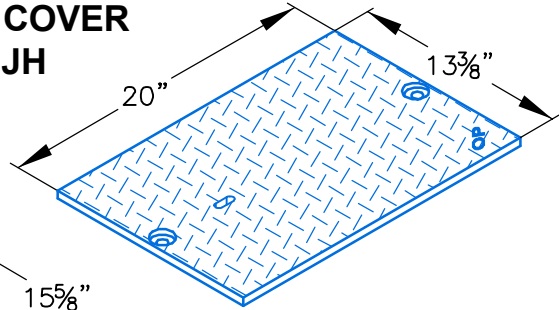
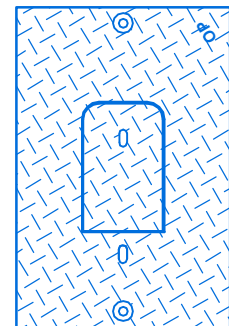
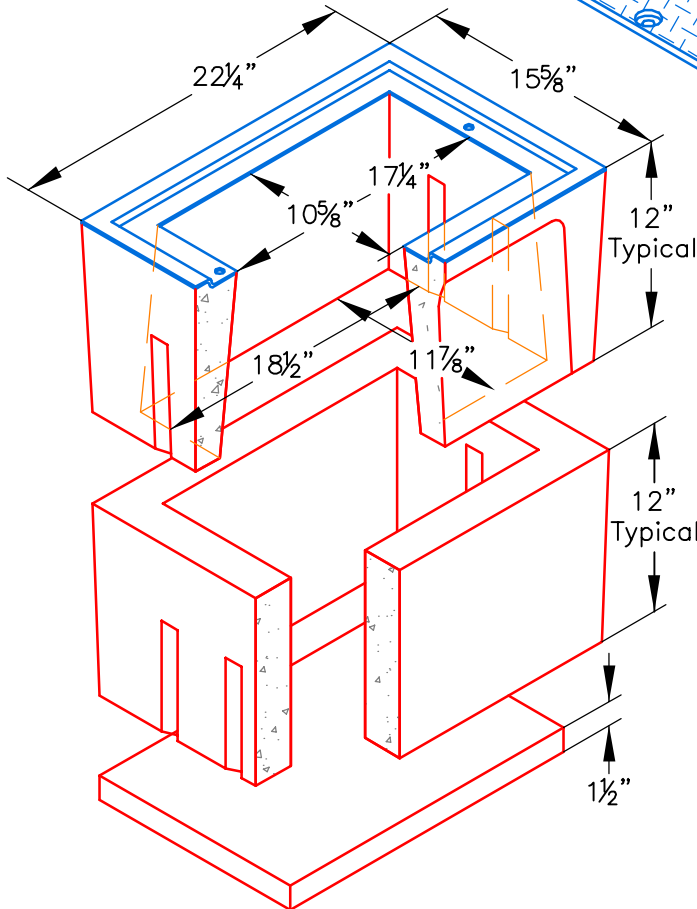


**Traffic Box
Caltrans No. 3-1/2T State Specs**

**STEEL CHECKER COVER
No. B1017-51JH
44 lbs.**



**TRAFFIC BOX
No. B1017BOX
130 lbs.**



B1017-51GH

A high density reinforced concrete box with non-settling shoulders positioned to maintain grade and facilitate back filling. Approximate dimensions and weight shown.

Ordering Code	Item	Approx. Shipping Weight	Description
B1017BOX	BOX	130	B1017 Utility Box (10 ⁵ / ₈ " x 17 ¹ / ₄ ") H/20 loading— 20 per pallet
B1017-51JH	COVER	44	Steel checker plate, H/20, bolt down
B1017-51GH	COVER	46	Steel checker plate, H/20 with reading lid 5" x 8"
B1017X12	EXTENSION	129	12" Reinforced concrete H/20 loading— 20 per pallet
B9SL	SLAB	32	Reinforced concrete 13 ¹ / ₄ " x 19 ³ / ₄ ")

Galvanizing available on all steel covers.



Oldcastle Precast®
Enclosure Solutions

MADERA/TRACY/ROSEVILLE/PHOENIX
Phone: (800) 486-7070 Fax: (800) 486-6804
Copyright © 2009 Oldcastle Precast Inc.

B1017 BOX

FILE NAME: B1017_ISO

ISSUE DATE: January, 2009

www.oldcastleprecast.com

**B1017 BOX H/20 LOADING
10-5/8" x 17-1/4"**

