

# Hollowcore 101



## Short Span Tower Roof plank meets a specific need

Oldcastle Precast Building Systems manufactures plank to meet the needs of our customers. Whether it is thousands of square feet for a large project or just a few pieces, each slab has its own “personality”. We design and cast (as per the approved shop drawings) just for your job.

A special variation to our flat slabs was developed with our customers in mind. We manufacture a special cross section for short span roof slabs. These are used to cap the stair and elevator

towers typically found in high rise residential applications.

The Oldcastle Precast short span roof slabs will serve as the finishing touch to your building’s stair and elevator tower.

In addition to a fast, fire safe ceiling, these roof slabs eliminate expensive crane re-mobilization costs.

This solution will keep your project on schedule and under budget.

### Common Practice: Short Span Tower Roof plank

### Whether you know it or not, floors are the

key element when it comes to architectural freedom and design: their load bearing capacity has a direct influence on the need for partition walls and other structural elements of a building. Hollowcore slabs are prestressed floor elements with voids. The excellent load-bearing capacity and structural efficiency allows you to build large areas with fewer partition walls. Ultimately, this means greater freedom in design and architecture during and after construction as well as savings in material costs.

See our web site for additional topics on hollow core plank: camber, toppings, finished floor systems, openings, installation and more.

#### Locations:

Oldcastle Precast  
Building Systems  
123 County Route 101  
Selkirk, NY 12158  
800-523-9144

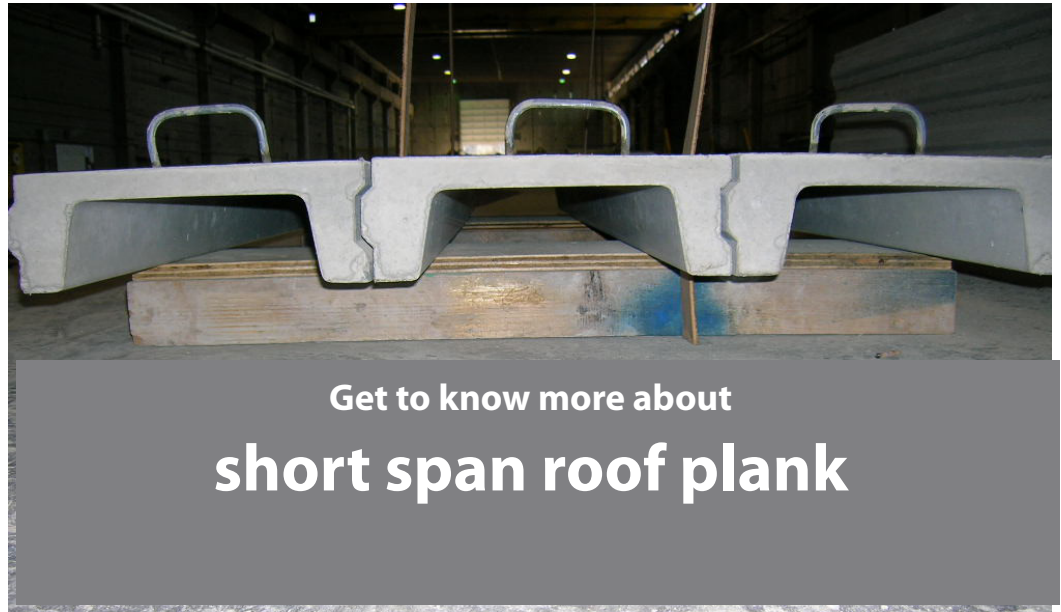
Oldcastle Precast  
Building Systems  
1401 Trimble Road  
Edgewood, MD 21040  
800-523-9144  
[oldcastlesystems.com](http://oldcastlesystems.com)



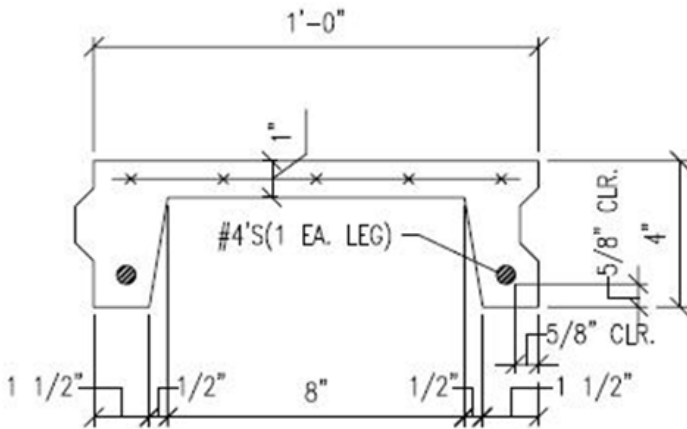
Roof slabs are available in standard lengths of up to 10 feet and widths of 1 foot but can easily be cut in the field for an accurate fit.

The standard width of 1 foot allows for flexibility in various rooftop elevator and stair shaft sizes.

Due to the standard width of the product, side lap conditions will vary, which will cause differing edge-forming dimensions at the sides of each tower shaft.



**Detail: Short Span Roof Plank.**



**Installation:**

- Installed quickly and efficiently
- Installed on level bearing surfaces
- Bolted for a stable connection
- Roofing materials applied directly
- Easily cut in the field for custom fit
- Does not require a crane for installation
- Single source supplier for floor and roof

**Materials:**

- Standard size, shape and design
- Standard lengths up to 10'
- Standard width of 1'
- Manufactured with normal weight concrete
- Cross section allows for lighter weight floor system
- Minimum compressive strength of 4,000 psi
- Contains no combustible materials

**Applications:**

- Used on elevator and stair roof assemblies **only**
- Contributes to lighter framing system on the roof
- Substantial cost savings
- Can be used with Structural Topping
- Spans based on 100 psf live load .*

**Roofing materials can be applied directly to the short span plank. Does not require a crane for installation**

**Why Specify Short Span Plank**

The Oldcastle Precast roof slabs will serve as the cap for your building's stair and elevator towers. In addition to a fast, fire safe roof, the roof slabs eliminate expensive crane re-mobilization costs.

All types of roofing materials – shingles, membranes, metal roofing – can be applied directly to the roof planks. Care must be taken to properly seal the roofing materials so as not to allow for any moisture penetration.

The roof slabs were designed to meet our customers' requests for a lightweight product for stair and elevator rooftop applications. As

such it can't support HVAC roof top units, water tanks or solar panels.

Unlike our hollow core plank, openings cannot be cut into these bulkhead sections.

While they contain no UL rating, the cross section has a calculated fire rating of 1/2 hour. If your roof system requires a higher fire rating additional material can be applied. The fire proofing can be added to the undersides of the units within each piece and joint assembly or as directed by the Engineer of Record.

The information contained in this literature is for general information purposes only. The information is provided by Oldcastle Precast as a courtesy only. While we endeavor to keep the information up to date and correct, we make no representations or warranties of any kind, express or implied, about the completeness, accuracy, reliability, suitability or availability with respect to the information, products, services, or related graphics contained in this literature for any purpose. Any reliance you place on such information is therefore strictly at your own risk. In no event will we be liable for any loss or damage including without limitation, indirect or consequential loss or damage, injury or illness, or any loss or damage whatsoever arising from loss of profits arising out of, or in connection with, the use of this literature.