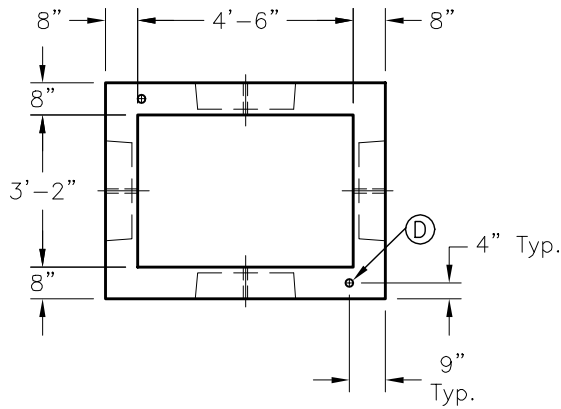


GENERAL NOTES:

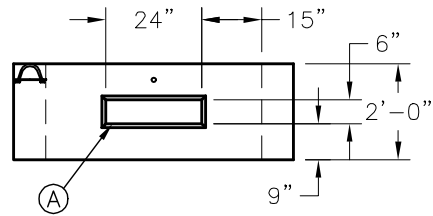
1. Concrete: 28 Day Compressive Strength  $f'_c = 5,000$  psi.
2. Rebar: Grade 60 Per ASTM A615.

DATA CHART

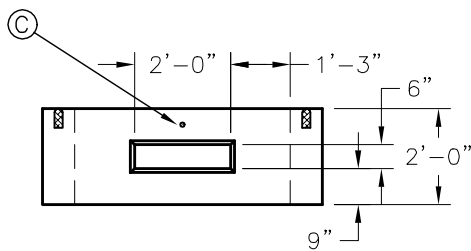
LTR	QTY	Description
A	2	6" x 24" Knockout
B	2	6" x 32" Knockout
C	4	1" $\phi$ Hole (Ref Pulling Eye)
D	2	5" Utility Anchor



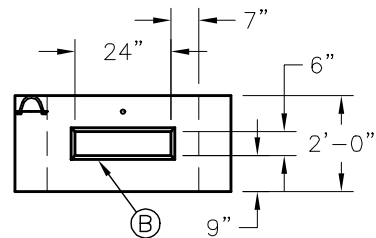
**PLAN VIEW**



**REAR ELEVATION**



**ELEVATION**



**END ELEVATION**



**HD HH RISER**

FILE NAME: 325UEHHDRISER\_DET.DWG

ISSUE DATE: January, 2008

[www.oldcastleprecast.com](http://www.oldcastleprecast.com)

**3'-2" x 4'-6" x 2'-0" I.D.  
Heavy Duty Handhole Riser  
NGRID  
3,600 Lbs**

Copyright © 2008 **Oldcastle Precast**