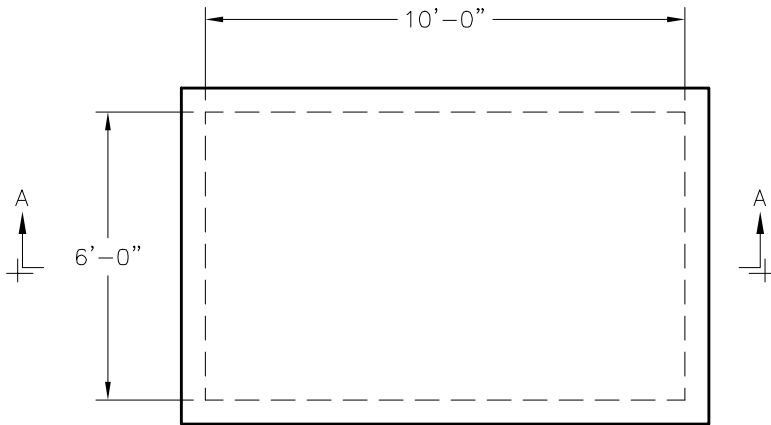
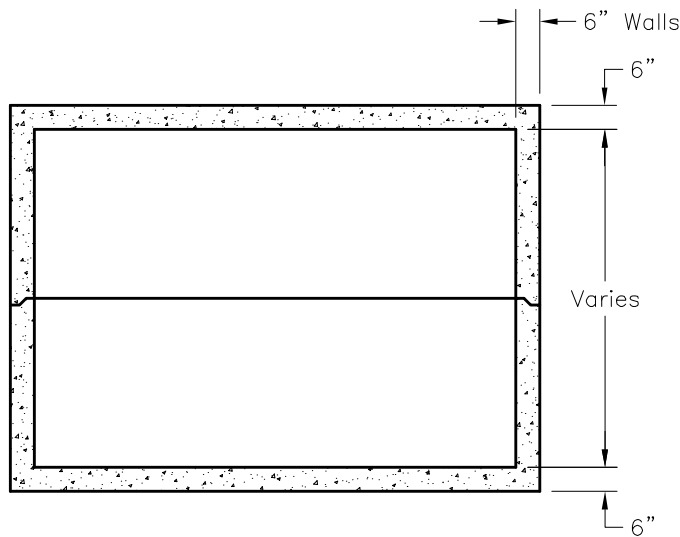


NOTES:

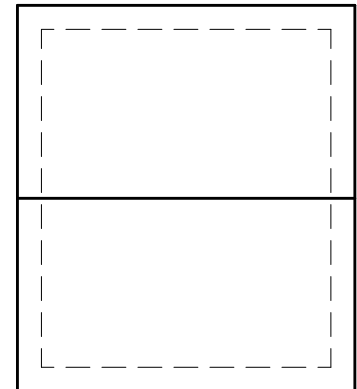
1. Concrete : 5,000 P.S.I.
Minimum Strength @ 28 Days
2. Steel Reinforcing– ASTM A-615,
Grade 60.
3. Cover to Steel–1" Minimum
4. Vault are Designed to Meet ASTM
C858 and ACI 318 with AASHTO
HS-20 Loading
5. Earth Cover –0 to 5 Feet Max.
Minimum
6. Construction Joint–Sealed with
1" Dia Butyl Rubber or Equivalent
7. Wall Thickness Available in 6", 8" &
10"



PLAN VIEW



SECTION A-A



END VIEW



MH6X10

FILE NAME: 324UCPMH6X10_DET.DWG

ISSUE DATE: January, 2008

www.oldcastleprecast.com

**6'-0" x 10'-0" x Variable I.D.
Utility Vault**

Copyright © 2008 **Oldcastle Precast**