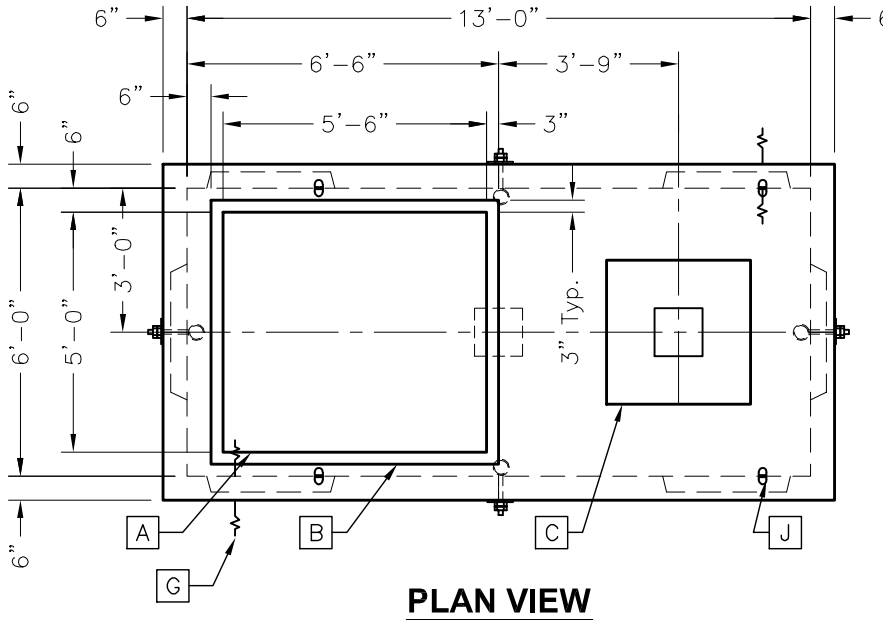


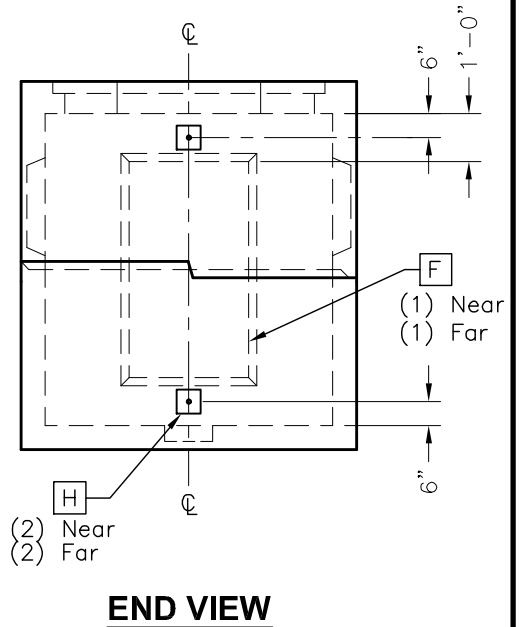
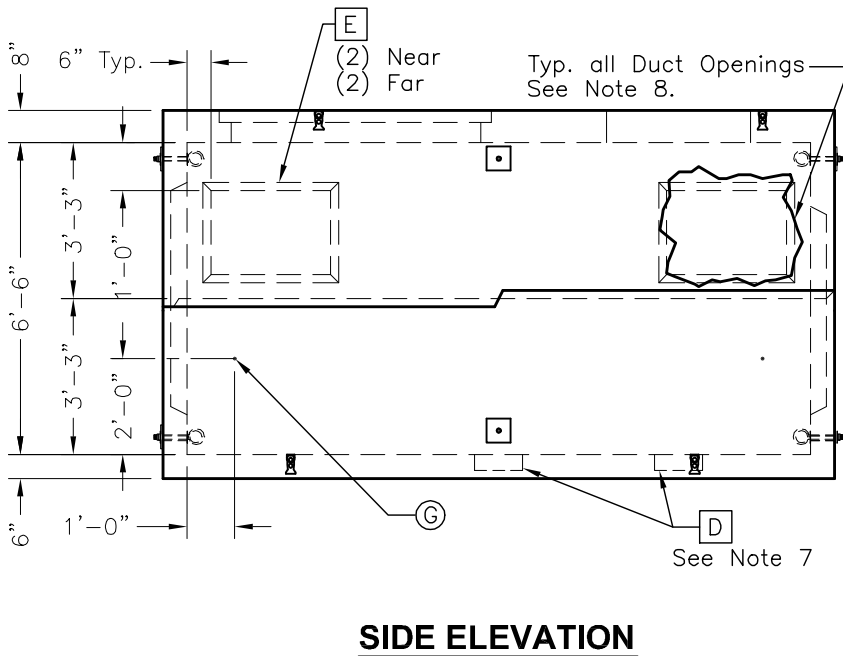
GENERAL NOTES:

1. Concrete: 28 Day Compressive Strength $f'c = 5,000$ psi
2. Rebar: Grade 60 Per ASTM A615
3. Design Loading: AASHTO HS20-44.
4. General Contractor to Verify all Openings Sizes and Locations.
5. All Pipe and Roof Openings have Additional Rebar Reinforcement.
6. Joint to be Sealed with 1" Butyl Rubber.
7. Chase to Provide (1) One Concrete Plug to Fill Unused Sump.
8. Rebar at Duct Openings to be Split to Allow Field Bending For Support of Incoming Duct Bank.



DATA CHART

LTR	QTY	Description
A	1	5'-0" x 5'-6" Opening
B	1	3" x 3" Recess (Ref. Collar)
C	1	38" Square Opening
D	2	12" x 12" x 4" Deep Sump
E	4	2'-6" x 1'-9" Knockout
F	2	2'-6" x 4'-6" Knockout
G	2	4/0 Bare Copper Wire x 18"
H	4	1" Dia. x 9" Pulling Eye
J	8	Lifting Insert



MH 6X13X66SG

FILE NAME: 325UEEMH6X13X66_DET.DWG

ISSUE DATE: January, 2008

www.oldcastleprecast.com

**6'-0" x 13'-0" x 6'-6" I.D.
Switchgear Manhole
NGRID**

Copyright © 2008 **Oldcastle Precast**