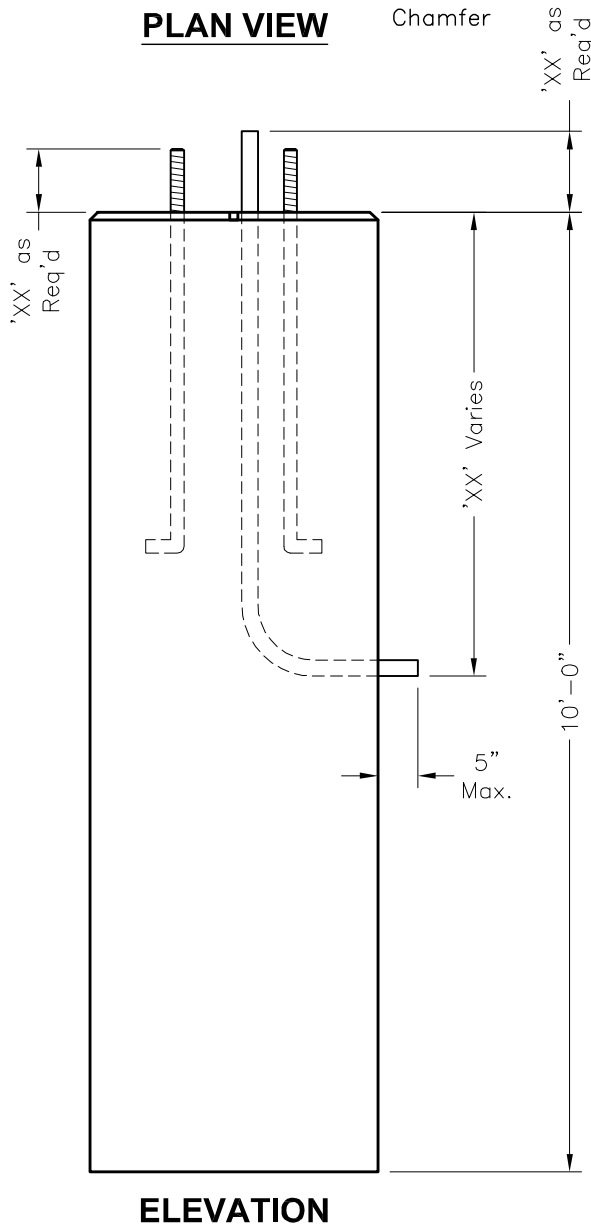


GENERAL NOTES:

1. Concrete: 28 Day Compressive Strength $f'_c = 4,000$ psi Type III.
2. Rebar: Grade 60 Per ASTM A615 (Black).
3. Sweep will not Extend Further than 3" from Side of Base.
4. For MHD. all Sweeps Must be One Piece Galvanized Construction.

DATA CHART

| LTR | QTY | Description |
|-----|-----|-----------------------------------|
| (A) | 4 | XX" ϕ x XX" Long Anchor Bolt |
| (B) | XX | XX" ϕ x XX" Long Sweep |



LPB36D-10

FILE NAME: 325UEF3DX10_DET.DWG

ISSUE DATE: January, 2008

www.oldcastleprecast.com

3'-0" Dia. x 10'-0"
Light Pole Base
MHD Standard
10,600 Lbs

Copyright © 2008 **Oldcastle** Precast®