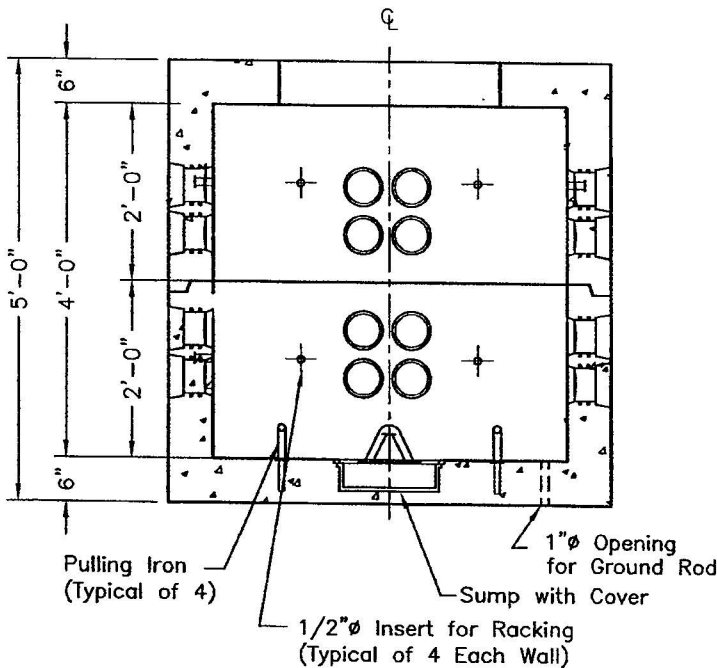


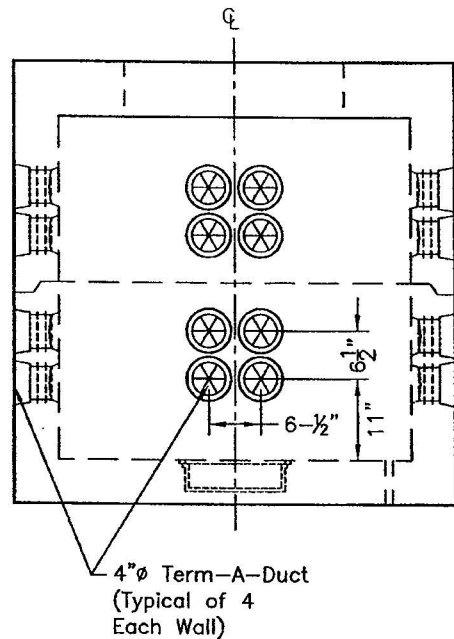
PLAN VIEW

NOTES:

1. Concrete: 28 Day Compressive Strength $f'_c = 4,500$ psi.
2. Reinforcing: ASTM A-615, Grade 60.
3. Joint Sealant: Butyl Rubber SS-S-00210.
4. Designed for Maximum Soil Cover of 5'-0" Above Box.
5. Supports an H20 Loading as Indicated by AASHTO.



SECTION VIEW A-A



ELEVATION VIEW B-B

SCALE: 1/2" = 1'-0"



444-SPLIT

**4'-0" x 4'-0" x 4'-0" I.D.
Electrical Vault**

FILE NAME: 410UEE444SPLITDWG

ISSUE DATE: Jan. 2003

www.oldcastleprecast.com

Copyright © 2003 Oldcastle Precast, Inc.

4478 Greer Circle, Stone Mountain, Ga. 30083
Phone: (770) 493-5420 Fax: (770)493-5425