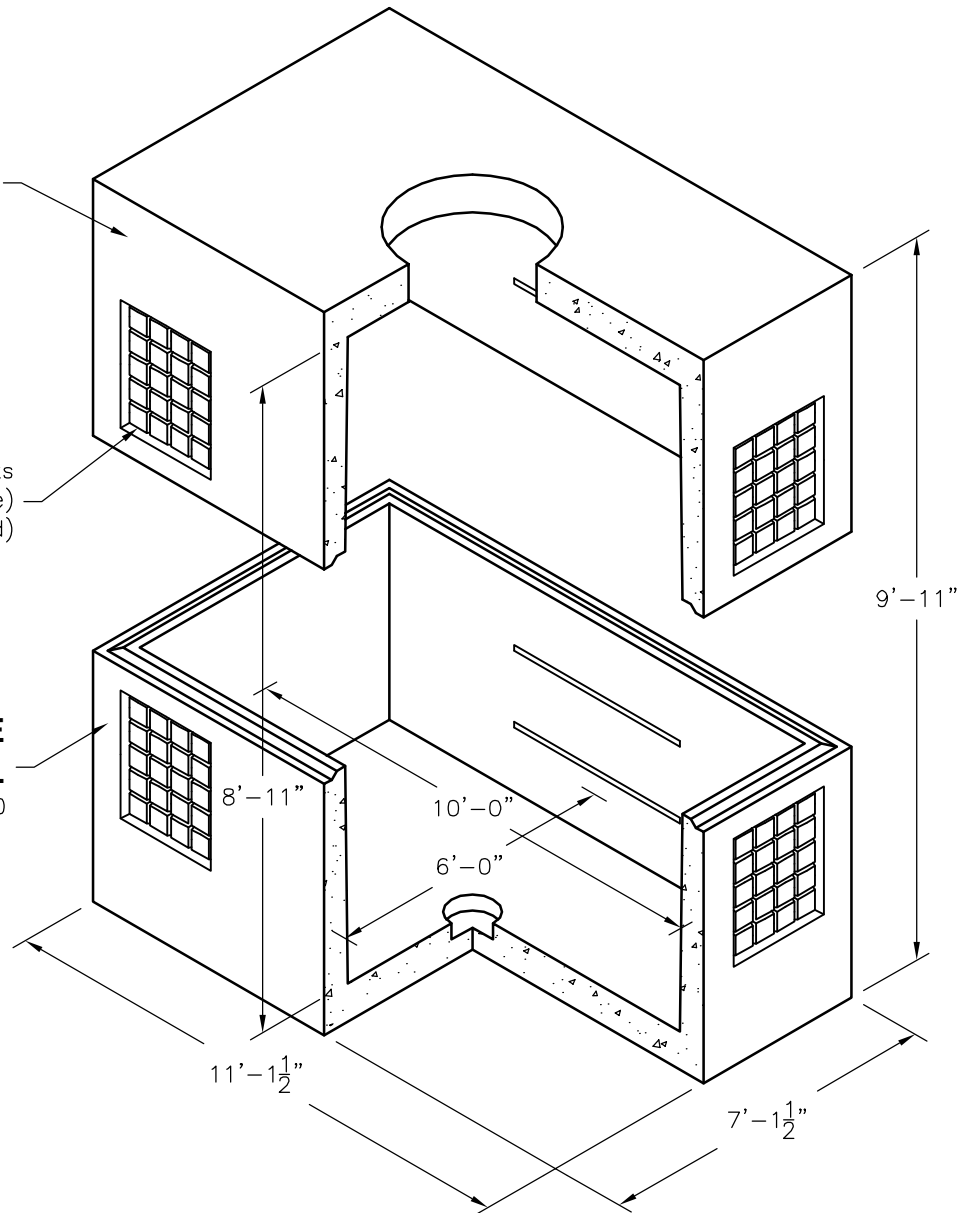


**TOP**  
**NO. 610-T37C**  
 Concrete With Hole  
 20,750

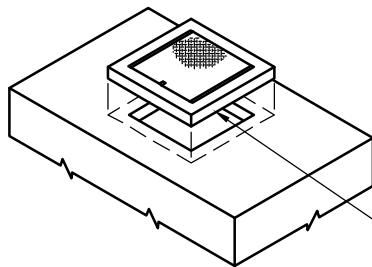
24" x 30" Knockouts  
 (4 Each Side)  
 (4 Each End)

**BASE**  
**NO. 610-BL**  
 21,650



**OPTIONAL COVERS**

(For other available covers see Covers section)



Locking Steel Cover  
 No. 44-332P  
 835lbs.

SCALE: 1/4" = 1'-0"



411 E. Frye Rd., Chandler, Arizona 85225  
 Tel: (480) 963-2678 Fax: (480) 899-1937

**610-LA**

FILE NAME: 040UEE610LAI.DWG

ISSUE DATE: JANUARY, 2008

[www.oldcastleprecast.com](http://www.oldcastleprecast.com)

**10'-0" x 6'-0" x 8'-11" ID**  
**ELECTRICAL VAULT**  
**STANDARD LAYOUT**

Copyright © 2008 Oldcastle Precast, Inc.