

Top Slab Can Be One Piece Or Multiple Sections

Access As Required

See Connection Detail

Gasket

"C" Channel As Required

Gasket

As Required

As Required

As Required

Blockout(s) As Required

As Required

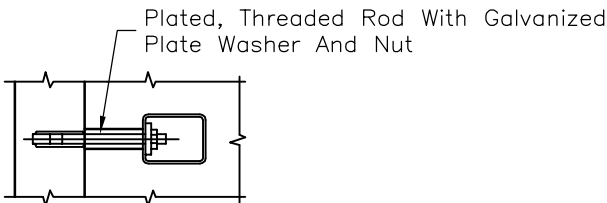
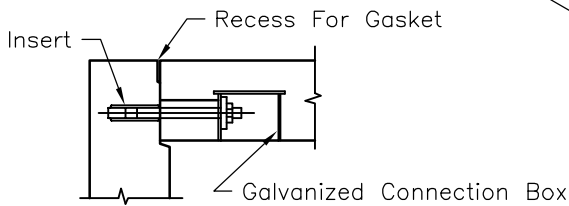
Customer To Grout Top, Base, & Corners

Gasket

Gasket

As Required

Base Slab Can Be One Piece Or Multiple Sections



ABOUT PANEL VAULTS:

Panel Vaults are custom designed to any size and configuration for job requirements. Access, blockout(s) and embeds as required.

Contact Utility Vault representative for details.

CORNER CONNECTION DETAILS SCALE: 1/4"=1'-0"



411 E. Frye Rd., Chandler, Arizona 85225
Tel: (480) 963-2678 Fax: (480) 899-1937

PANEL VAULT

FILE NAME: 040UMPPANELVI.DWG

ISSUE DATE: JUNE, 2001

www.oldcastleprecast.com

PANEL VAULT STANDARD LAYOUT

Copyright © 2008 Oldcastle Precast, Inc.