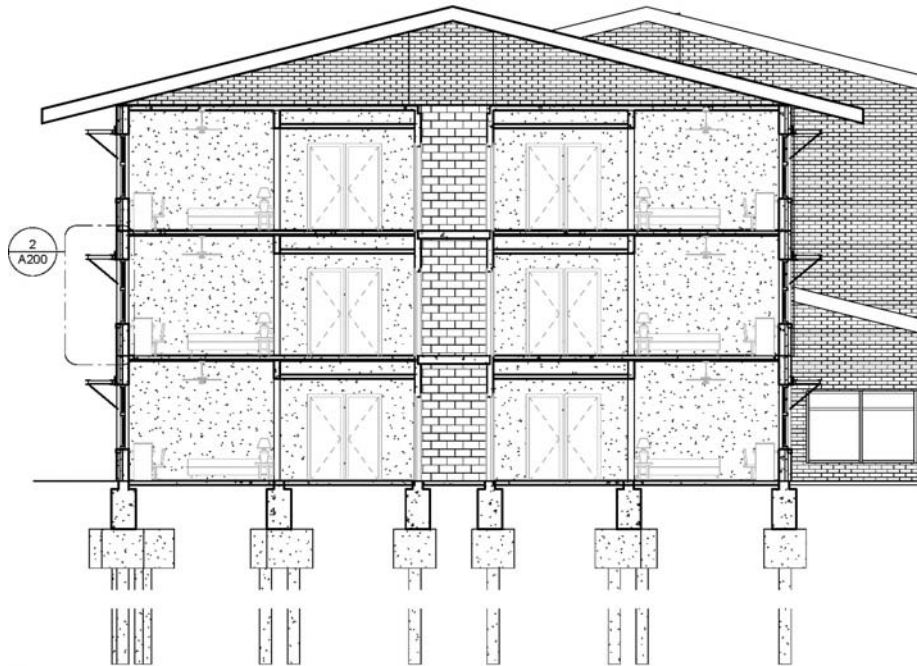
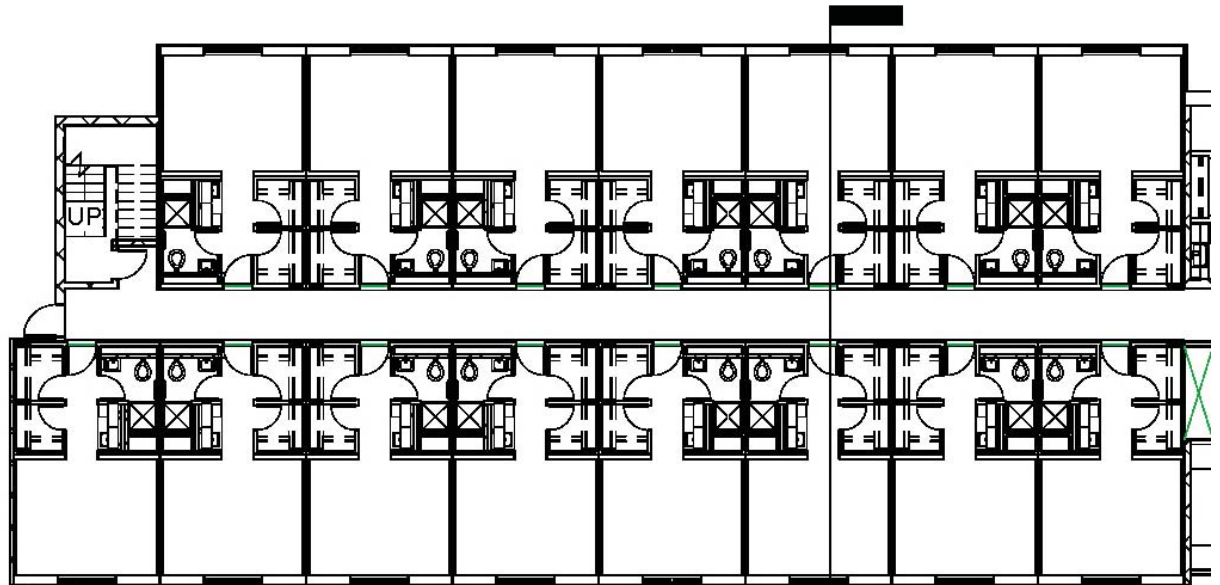




Copyright © 2008 by SMRT



(2) Structural Precast Concrete Modules make up a single BEQ Room



Precast Components

Design, off-site fabrication at an Oldcastle Precast certified plant, delivery and erection of precast concrete BEQ barracks modules. The precast concrete modules are load bearing monolithically cast five sided modules, cast without a floor slab. The modules are cast with conduit for all electrical and technical wiring and openings larger than 10 inches are cast in. The exterior walls of the modules are cast with 2" of rigid insulation, and 3" exterior wythe with a standard form liner finish unless otherwise specified. All products are cast with standard gray cement and local aggregates unless otherwise specified. The precast concrete BEQ modules can be provided with necessary furniture, finishing, connections, embeds, boxes, conduit and openings as specified in the Scope of Work. Interiors of the BEQ units can be finished and painted. No additional wall systems are needed.