

educational



**building systems**

public, private  
nursery, elementary  
middle, secondary

**simplicity and versatility**

---



## School Blocks™

---

### **Precast Concrete Classroom additions**

When it comes to expanding your facilities, you want a partner who will work with you every step of the way to ensure that your special needs are met in the most cost-effective manner. With Oldcastle Precast, you have found that partner. Our systematic approach is driven by quality, innovative solutions and *your* bottom line.

*“Clearly, any school entity dealing with a need to quickly add space should look closely at this approach.”*

— Equus Design Group

# Proven

Dependable, durable, efficient, quiet, safe... these are some of the qualities you will find in our precast concrete classroom additions. Our building system is the result of many years of research and development and studying the needs of the marketplace.



You receive solutions to fit your needs:

- sales, engineering and conceptual design expertise
- manufacturing services
- project management
- on-site erection services



Our experience has enabled us to perfect a building system that can cost-effectively solve many problems inherent in school construction or existing building expansions.

# Reliable

You receive high quality, lifetime structural precast building components from a local source. Oldcastle owns and operates over 70 precast manufacturing plants nationwide and has tens of thousands of precast building components in place today.



Patented components include:

- classroom modules
- connector links to existing buildings
- bathrooms that are fully outfitted
- stairwells
- elevator shafts

# Quality

Our solid reputation is built on 50+ years of providing the highest quality products and services to our clients.

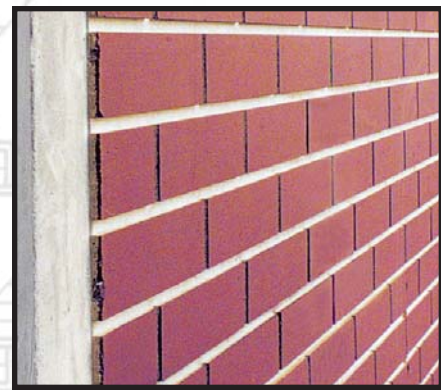


Each building component is made of steel-reinforced concrete with a minimum strength of 5,000 PSI.

All modules allow for a wide choice of pre-outfitted options. Some of these options include plumbing, data ports, electrical fixtures, furniture, doors, windows and insulation.

Available with a bricked exterior finish, or your choice of multiple concrete form linear finishes, nine feet of headroom and all the standard options. You will find this system meets all of your specifications and the most stringent codes.

All classroom building components are manufactured and equipped to the highest standards in our quality-controlled environment.



# Fast

---

The School Blocks™ System consists of a series of prefabricated structural concrete components that can be produced more efficiently at the plant than on-site, saving you time and money.



The components are manufactured during site development, then delivered to the site pre-finished and mechanically equipped. These durable, cost-effective building components are designed for rapid installation in the field. The over-all process reduces on-site finish work, limits campus interruption and gives you an earlier occupancy date.

# Flexible

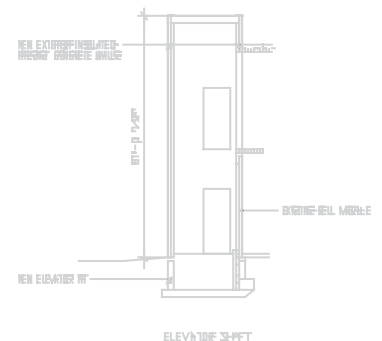
Our highly detailed and quality-monitored manufacturing process begins with Oldcastle's in-house custom designed and manufactured molds. That enables us to maintain tolerances of minus one-quarter inch to plus one-eighth inch, exceeding industry standards.



The building system is designed for ease of constructibility.



BUILDING SECTION 'B'



ELEVATION 33-44T

The manufacturing process used to produce your high-quality precast building components follows a precisely detailed progression. This process is normally a six-day cycle.

# Safe and Secure

Create classrooms, offices, conference rooms, bathrooms, and utility rooms of any size, for any use that have the same structural integrity and weather resistance as a conventionally build structure.



HOW GLASS/PARTIAL GLASS  
HOW BEING  
HOW EXTENDED/QUARTER  
CONSTRUCTION METAL ROOF  
HOW EXTENDED/QUARTER  
HOW EXTENDED/QUARTER



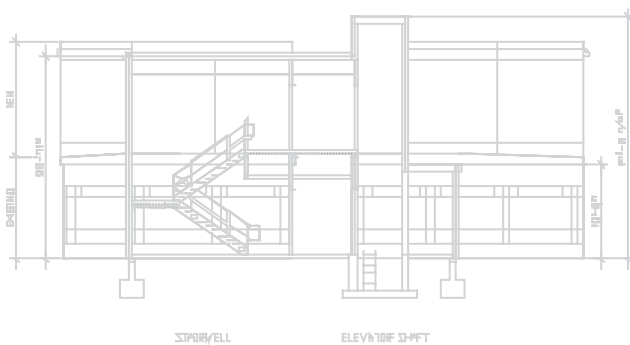
BUILDING SECTION 'C'

These economical building components provide:

- a safe and secure environment
- durable structures
- resistance to fire, wind and seismic conditions
- excellent sound transmission ratings
- code compliance

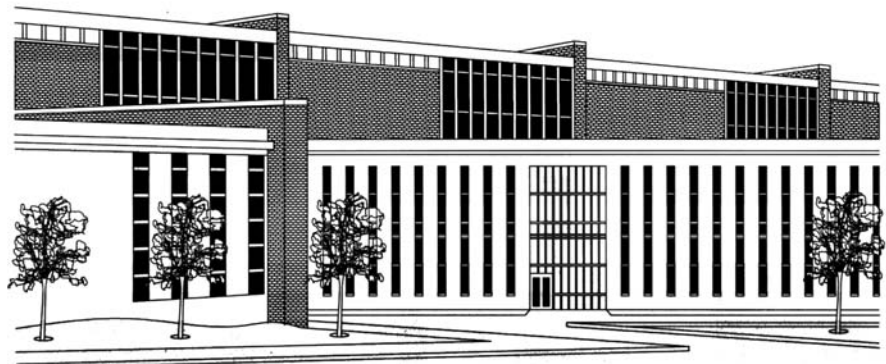


HOW 4" CONCRETE FOUNDATION  
HOW ELEVATED CONCRETE





A division of CRH, the international building materials group, Oldcastle operates over 600 facilities throughout the United States and Canada. We produce ready-mix concrete, precast concrete, masonry products, glass and aggregates, and distribute roofing, siding and insulation. Our precast division delivers lifetime structural precast components and utility products from over 60 Oldcastle manufacturing facilities nationwide. Our staff of experienced engineers creates precast solutions for many needs. Oldcastle's intense focus on quality, service and efficiency ensures your project will be first-class, and delivered on time at a competitive price.



**your solution for school facilities expansion**

---



[www.opmg.com](http://www.opmg.com)

Products



Educational

Contact us today

**215.257.2255**

or e-mail us at [opmg@oldcastleprecast.com](mailto:opmg@oldcastleprecast.com)

Oldcastle Precast Modular Group  
514 Township Line Road  
Telford, Pennsylvania 18969  
fax: 215.453.5813